



12.15.22

7:30-10:30 am

PDH/LU FORM

AEC UPDATE & ECONOMIC FORECAST 2023

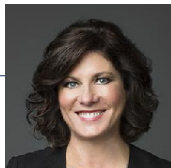
PROGRAM SUMMARY

SLC3's second most anticipated program of the year is back! Learn about our region, outside the region, updates on both design and construction what's in store for 2023.

PROGRAM MODERATOR

RHONDA HAMM-NIEBRUEGGE
Director of St. Louis International Airport

Rhonda has been the Director of St. Louis International Airport (STL) since January of 2010 as appointed by St. Louis City Mayor Francis Slay. The Airport is the primary air carrier facility for the St. Louis region that serves nearly 16 million passengers annually. Ms. Hamm-Niebruegge manages 500 employees with revenues of more than 183 million dollars in 2019. She is also Chairwoman of the 17-member St. Louis Airport Commission. She currently serves as chairperson of the Airport Oversight Committee of Airport Cooperative Research Program, a research program supported by the FAA. She is currently serving as chair of the board of Christian Hospital (BJC HealthCare) and a board member of BJC.



SPEAKER ON THE REGION

G. SUBASH ALIAS

CEO, Missouri Partnership

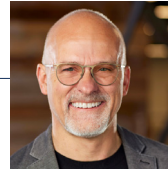
Since May 2019, Subash Alias has served as CEO at Missouri Partnership. Along with his colleagues, he actively markets the state to companies considering relocating or investing in new operations in Missouri. Before serving as CEO at Missouri Partnership, he was Senior Vice President and worked on the Business Recruitment team as one of four project managers working to attract companies to the state. Subash earned his undergraduate degree in Business Administration from St. Ambrose University in Davenport, Iowa, and received his MBA from the Olin Business School at Washington University in St. Louis.



SPEAKER ON DESIGN

DAVID KEHM, AIA

Principal, FGM Architects (FGMA)
FGM Architects (FGMA), a 200-person architecture firm with 8 offices around the country, including St. Louis and O'Fallon, IL. FGMA focuses on higher-ed, K-12, multi-family, municipal, corporate, federal, and faith-based projects. David is currently involved in projects with Southwestern Illinois College (SWIC), Kaskaskia College, Offutt Air Force Base, and Rend Lake. He brings 36 years of experience in architecture and our region. David earned his Bachelor of Architecture degree from Kansas State University.

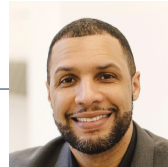


SPEAKER ON CONSTRUCTION

MICHAEL B. KENNEDY, JR.

CEO, KAI Enterprises

Michael B. Kennedy, Jr. serves as CEO of KAI Enterprises, an MBE-certified, full-service design and build firm offering Architecture, MEPFP Engineering, Interior Design, Construction and Program Management services. Michael is a community engager with a passion for transforming disenfranchised urban core neighborhoods into thriving communities. Involvement in the AEC industry and his community has always been important to Michael, who serves on several boards and mentoring organizations. A second-generation leader, Michael spends much of his time leading KAI's strategic vision, business alignment, expanding into new markets, developing new clients, and promoting diversity within the industry workforce.



MEALS/REFRESHMENTS:

Hot Buffet Breakfast

LOCATION DETAILS:

Greenbriar Hills Country Club
12665 Big Bend Blvd
Kirkwood, MO 63122

AGENDA:

- 7:30 a.m. Registration/ Networking & Breakfast
8:15 a.m. Program Begins
9:30 a.m. Q&A
10:00 a.m. Program Ends

PROGRAM SPONSOR:



Name _____

The above attended this program and qualifie for either:

- > 2.0 Professional Development Hour (PDH) for Professional Engineers under Missouri statutes
> 2.0 Learning Unit (LU) through the American Institute of Architects

ST. LOUIS COUNCIL OF CONSTRUCTION CONSUMERS

301 Sovereign Court, Suite 101 | Ballwin, MO 63011 | 636.394.6200 | Email at: info@slccc.net